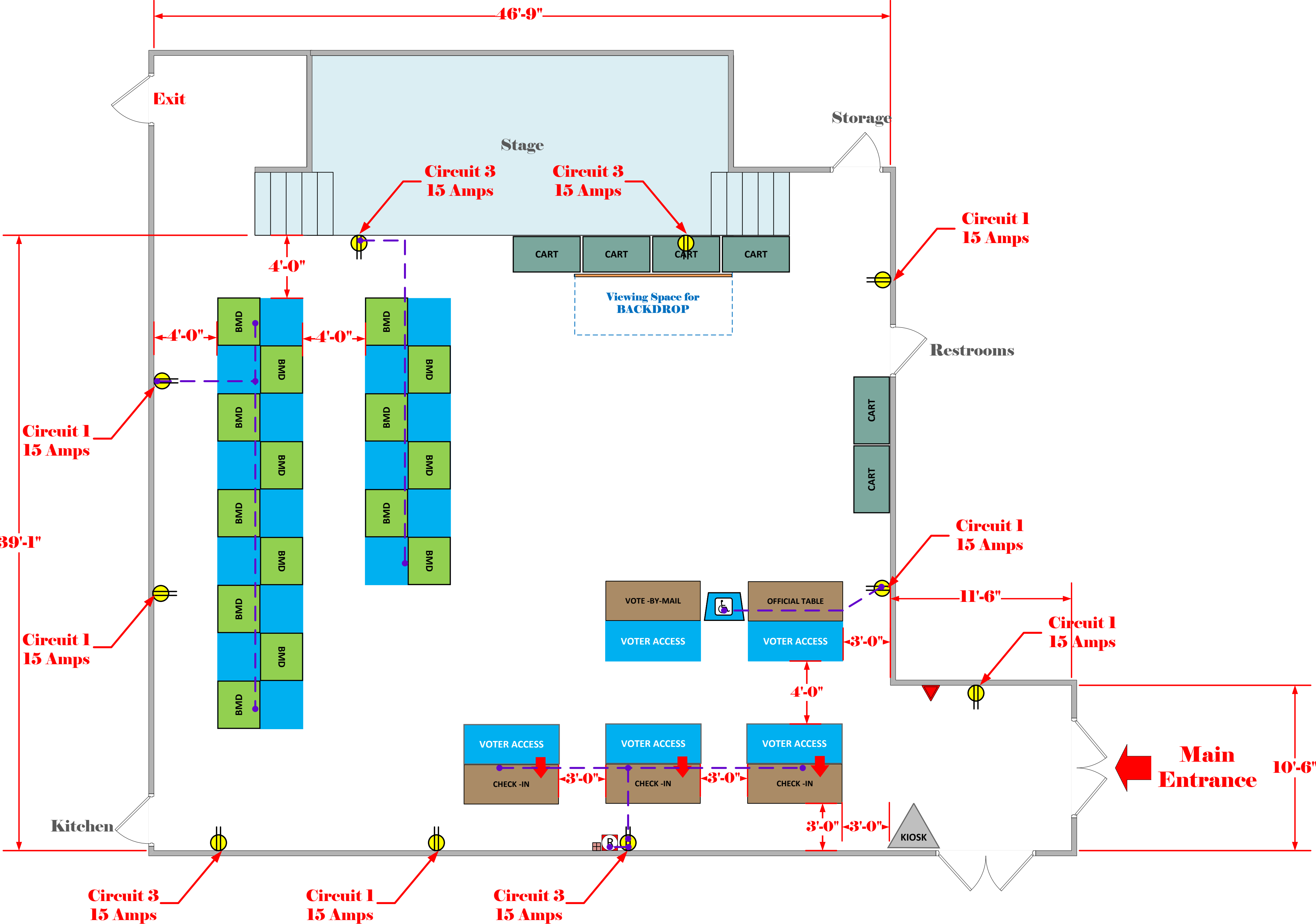


# Multi-Purpose Room

(1,938 Usable Sq. Ft.)



### LEGEND

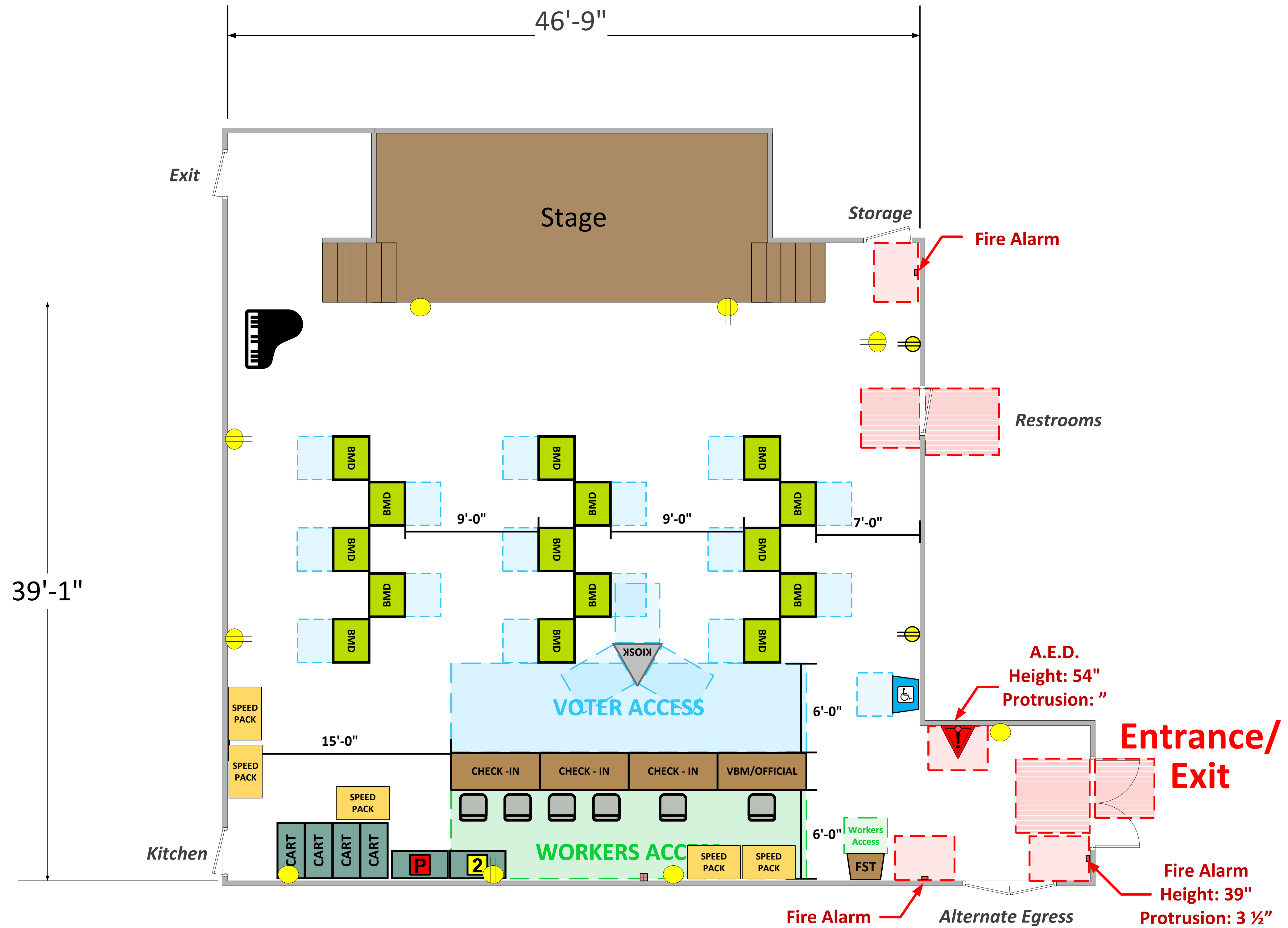
Room Size	Dimension: 46'9" x 39'1"	Sq. Ft: 1,938'
Number of BMDs		
POWER OUTLET		
PROTRUDING OBJECT		
Do Not Block Area		

TITLE	VCID 11484 Hollyglen Elementary School
-------	---




Equipment By:	Date:
Skeleton Drawn By: Andre Simmons	Date: 2020
Scale: 1 1/4" inches = 1' Ft.	

Each chair at a CHECK-IN station equals one ePollbook

## Multi-Purpose Room (1,938 Usable Sq. Ft.)



## LEGEND

Room Size	Dimension: 46'9" x 39'1"	Sq. Ft: 1,938'
Number of BMDs	15	
POWER OUTLET		
PROTRUDING OBJECT		
Do Not Block Area		

VCID 11484

# Hollyglen Elementary School

***Each chair at a CHECK-IN station equals one ePollbook***

Equipment By: <b>David Chaparro</b>	Date: <b>09/03/24</b>
Skeleton Drawn By: <b>Andre Simmons</b>	Date: <b>2020</b>
Scale: <b>1 1/4" inches = 1' Ft.</b>	