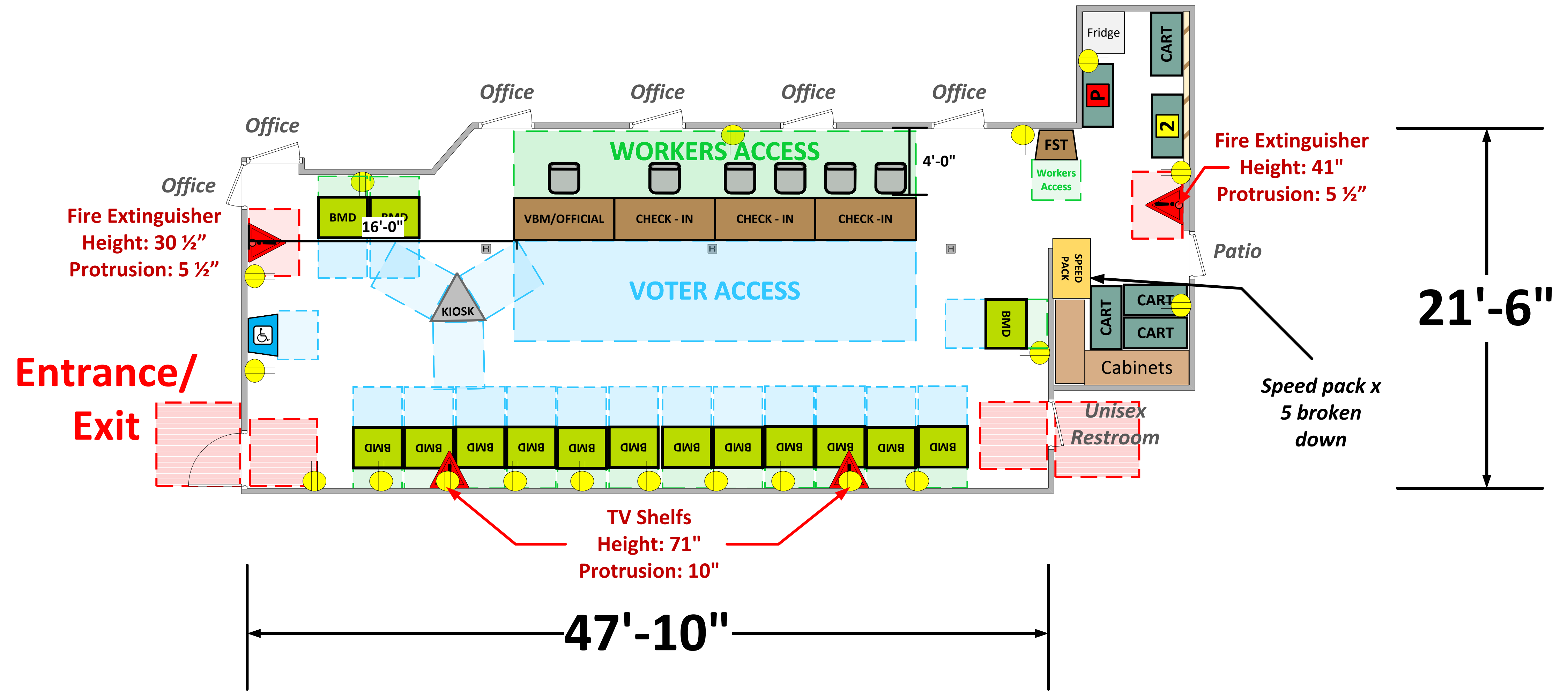
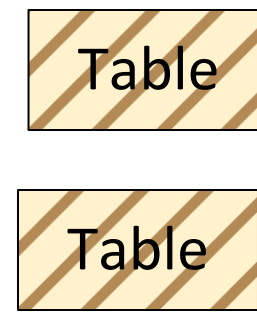


Main Room (992 Usable Sq. Ft.)

Movable
Tables



LEGEND

| | | |
|-------------------|------------------------------|-------------------|
| Room Size | Dimension: 47'10" x 21'6" | Sq. Ft: 1,028' |
| Number of BMDs | 15 | |
| POWER OUTLET | | |
| PROTRUDING OBJECT | | |
| Do Not Block Area | | |

TITLE
VCID 13652
National Council of Negro Women

Each chair at a CHECK-IN station equals one ePollbook

| | |
|--|--------------------------|
| Equipment By: Ryan Rivas | Date: 02/20/26 |
| Skeleton Drawn By: Chaparro / Rivera | Date: 04/29/25 |
| Scale: 1\4" inches = 1' Ft. | |