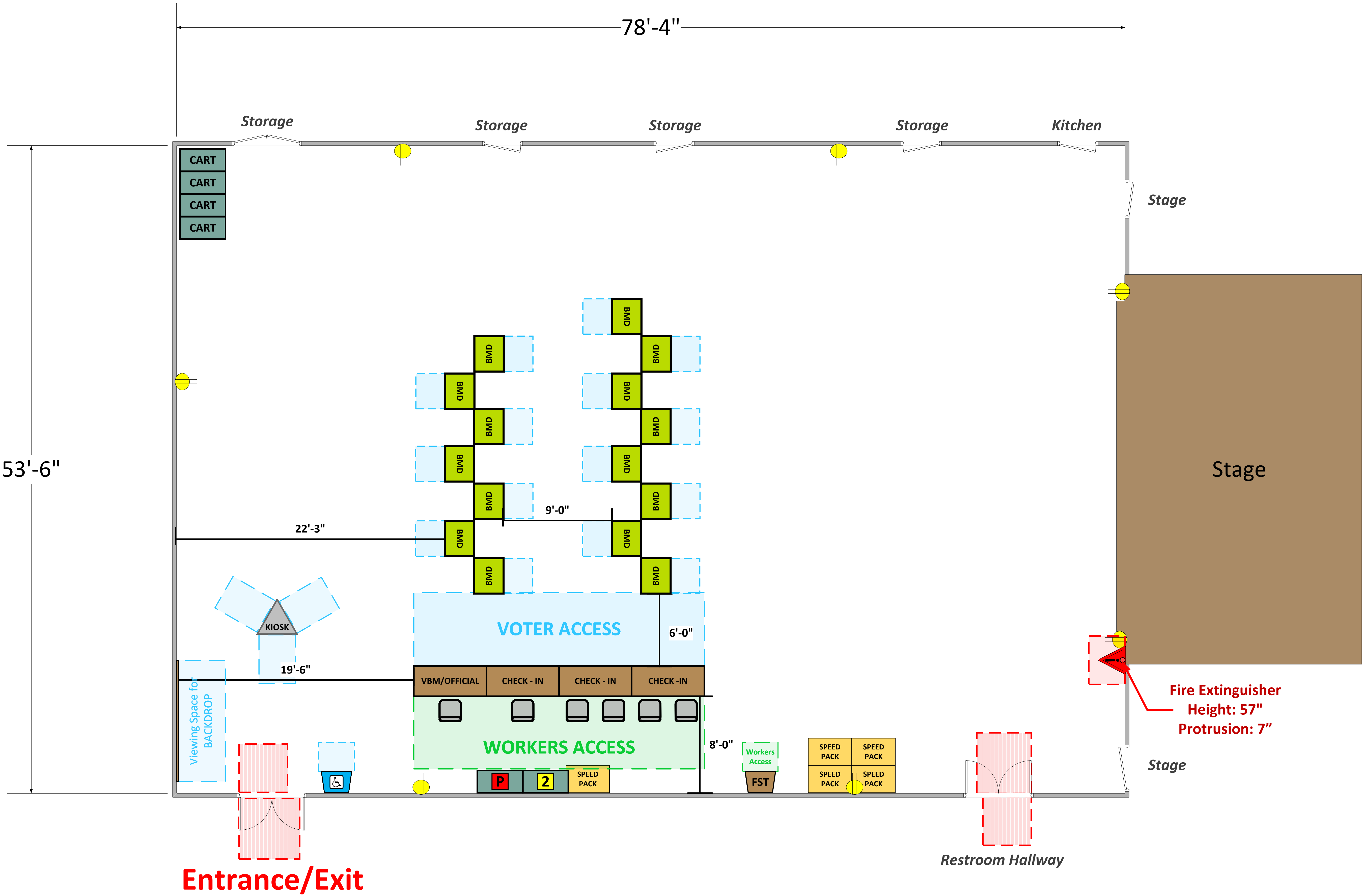


# Gymnasium

(4,785 Usable Sq. Ft.)



**LEGEND**

Room Size	Dimension: 78'4" x 53'6"	Sq. Ft: 4,190'
Number of BMDs	15	
POWER OUTLET		
PROTRUDING OBJECT		
Do Not Block Area		

TITLE

**VCID 20849**  
**Zion Hill Baptist Church**

**Entrance/Exit**

**Fire Extinguisher**  
**Height: 57"**  
**Protrusion: 7"**

***Each chair at a CHECK-IN station equals one ePollbook***

Equipment By:	Date:
<b>Ben Richardson</b>	<b>08/31/24</b>
Skeleton Drawn By:	Date:
<b>David Chaparro</b>	<b>08/28/24</b>
Scale:	
<b>1\4" inches = 1' Ft.</b>	