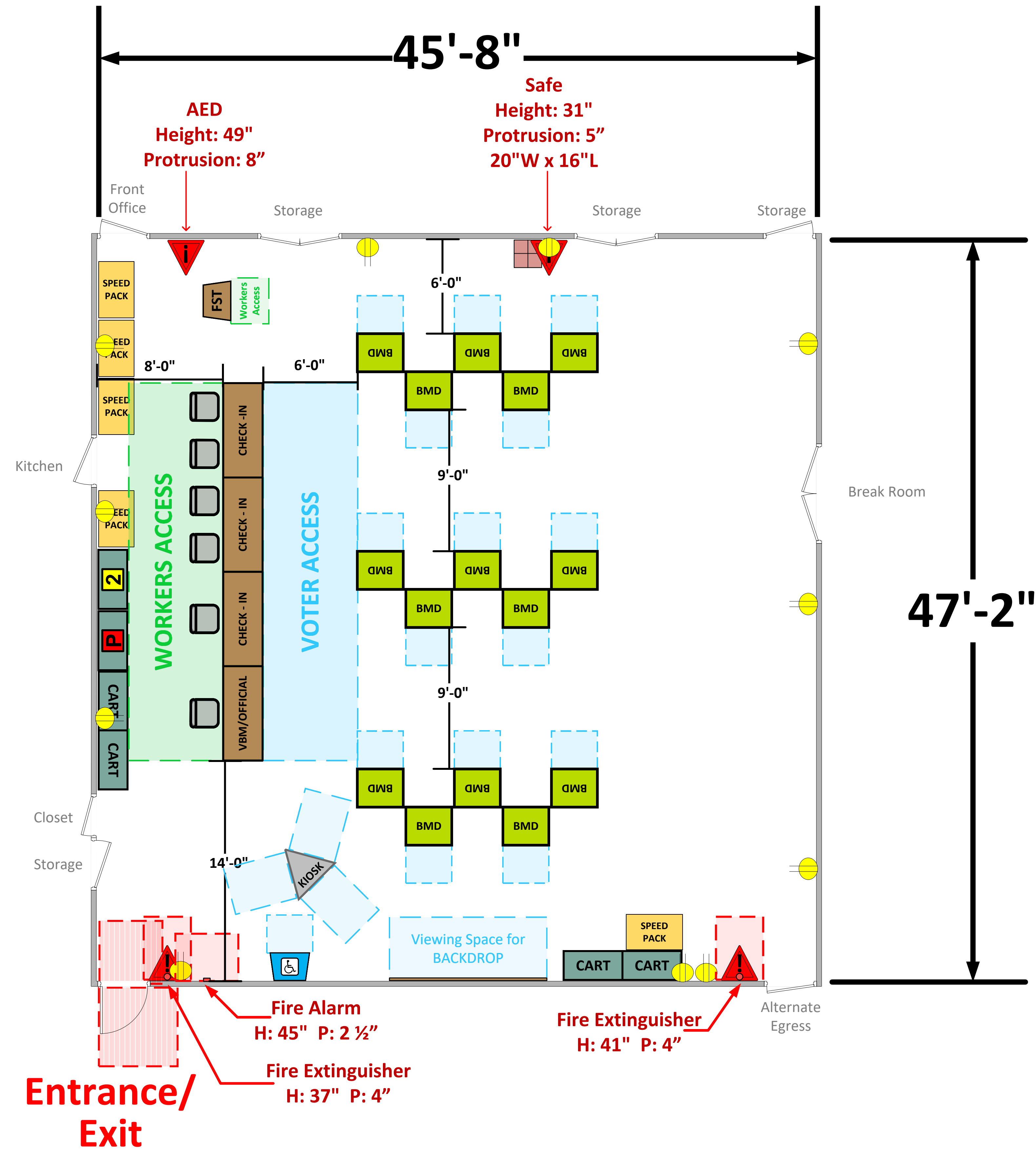


Multi-Purpose Room (2,153 Usable Sq. Ft.)



LEGEND

| | | |
|-------------------|-----------------------------|-------------------|
| Room Size | Dimension: 45'8" x 47'2" | Sq. Ft: 2,153' |
| Number of BMDs | 15 | |
| POWER OUTLET | | |
| PROTRUDING OBJECT | | |
| Do Not Block Area | | |

VCID 21556
Charter Oak Adult Education

Each chair at a CHECK-IN station equals one ePollbook

| | |
|--------------------|----------------------|
| Equipment By: | Date: |
| David Chaparro | 01/25/24 |
| Skeleton Drawn By: | Date: |
| Anthony Gonzales | 01/13/24 |
| Scale: | 1/4" inches = 1' Ft. |