
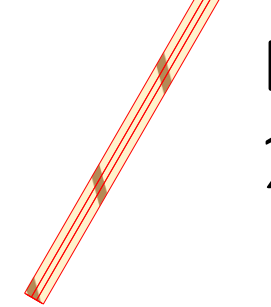
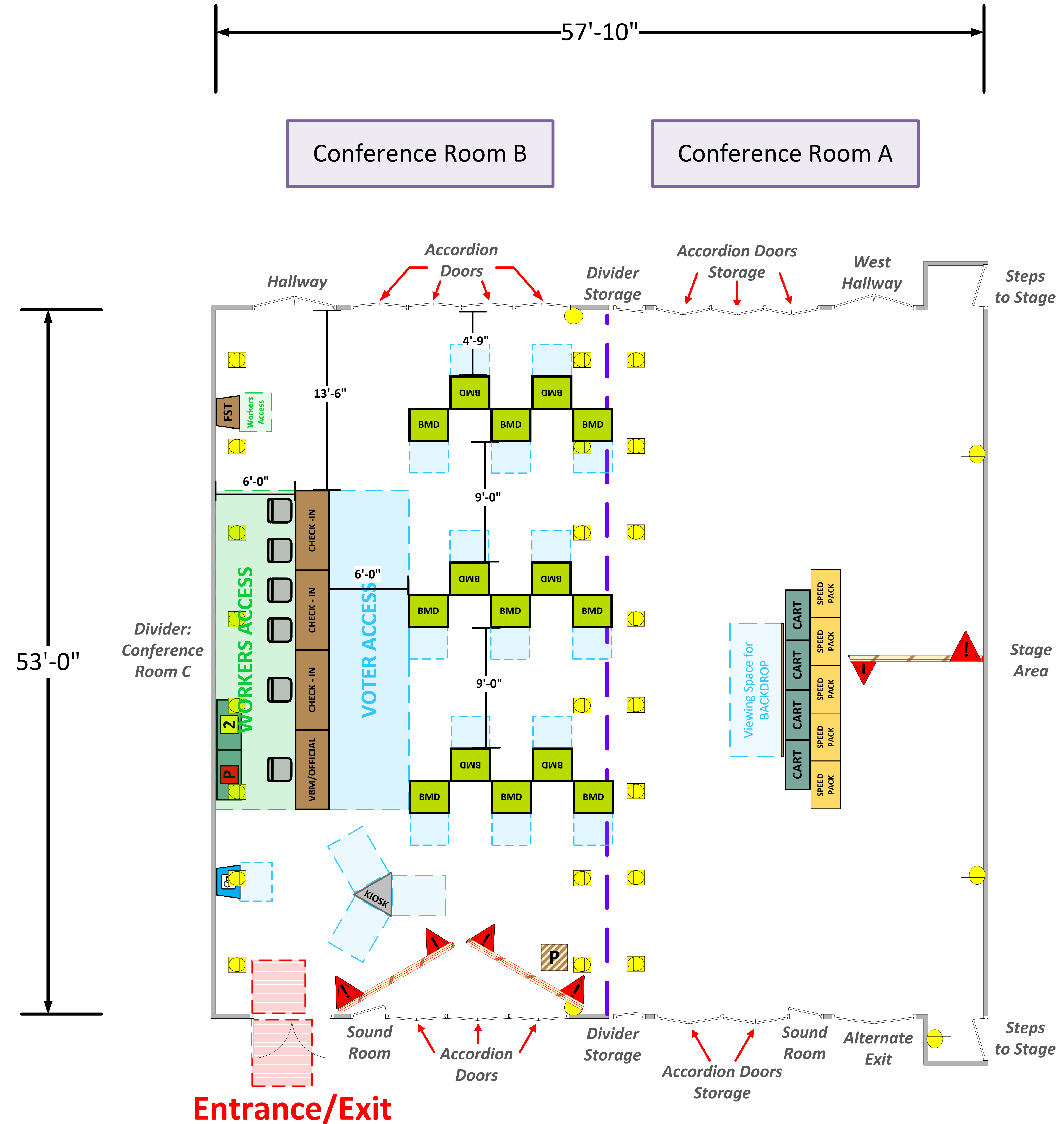





Conference Rooms A & B (3,065 Usable Sq. Ft.)

 Movable Extension Cords
 1/2" Abrupt Level Change



LEGEND

Room Size	Dimension: 57'10" x 53'	Sq. Ft.: 3,065'
Number of BMDs	15	
POWER OUTLET		
PROTRUDING OBJECT		
Do Not Block Area		

TITLE: **VCID 31047**
Los Angeles County Department of Public Works

Entrance/Exit

Each chair at a CHECK-IN station equals one ePollbook

Equipment By:	Date:
Carlos Montejano	3/27/26
Skeleton Drawn By:	Date:
David Chaparro	03/02/26
Scale:	
1/4" inches = 1' Ft.	