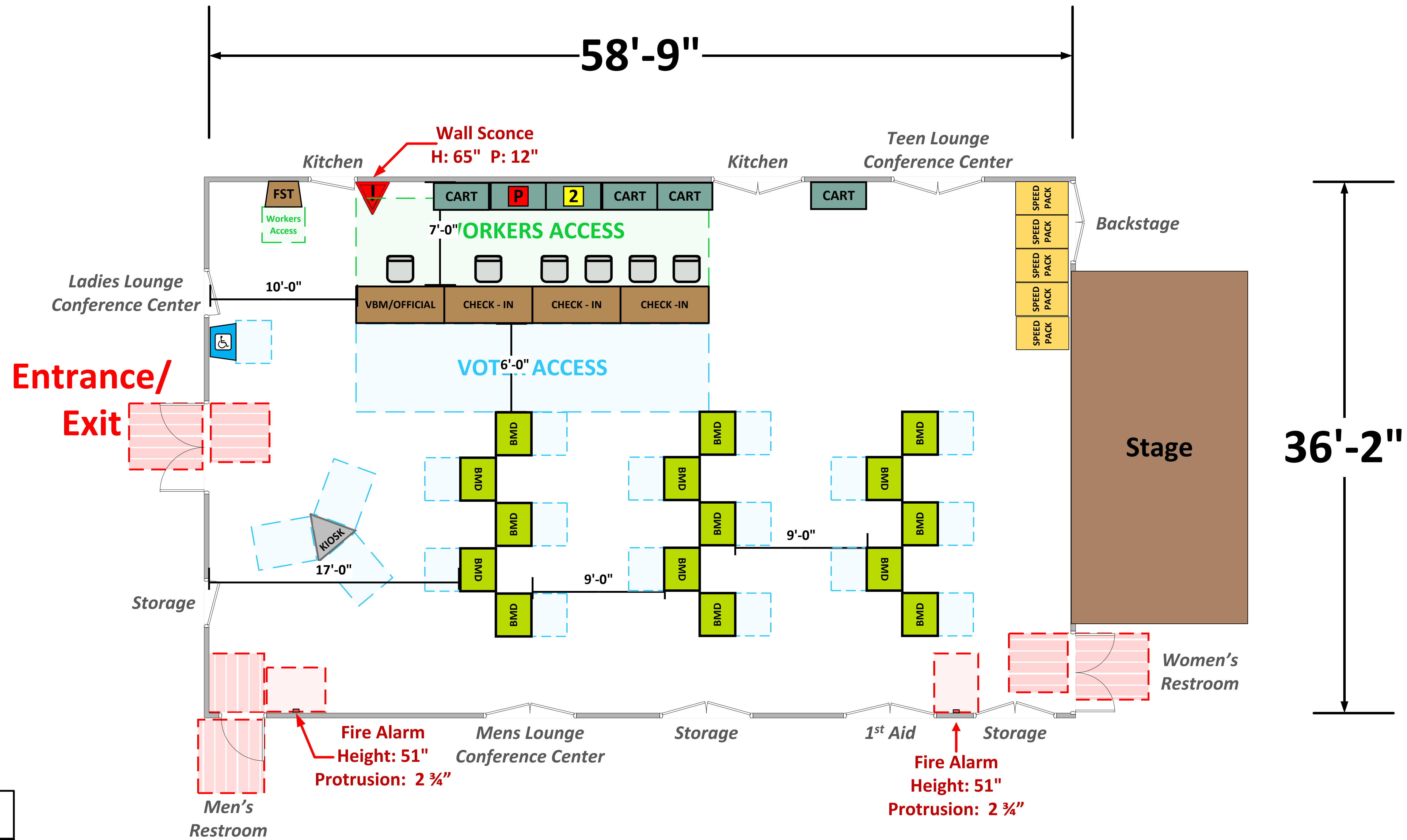


# Fellowship Hall (2,124 Usable Sq. Ft.)



## LEGEND

Room Size	Dimension: 58'9" x 36'2"	Sq. Ft: 2,124'
Number of BMDs		
POWER OUTLET		
PROTRUDING OBJECT		
Do Not Block Area		

TITLE  
**VCID 31748**  
**Greater New Morning Star**  
**Missionary Baptist Church**

**Each chair at a CHECK-IN station equals one ePollbook**

Equipment By: <b>Scott Taylor</b>	Date: <b>03/10/26</b>
Skeleton Drawn By: <b>David Chaparro</b>	Date: <b>06/17/25</b>
Scale: <b>1/4" inches = 1' Ft.</b>	