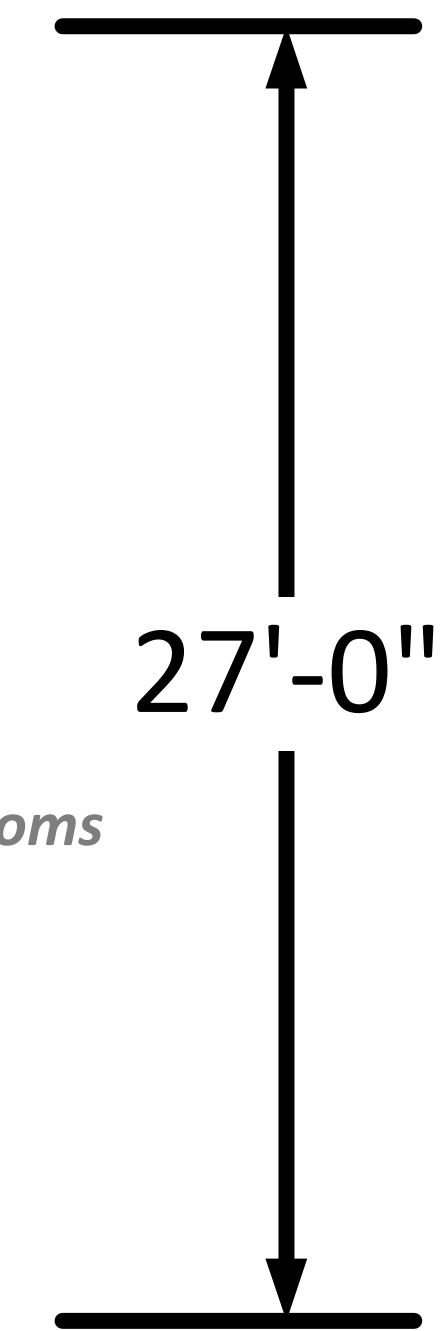
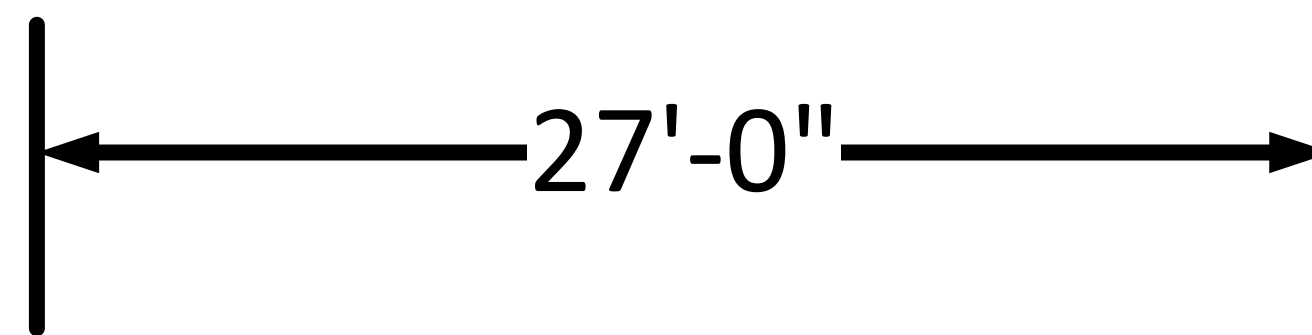
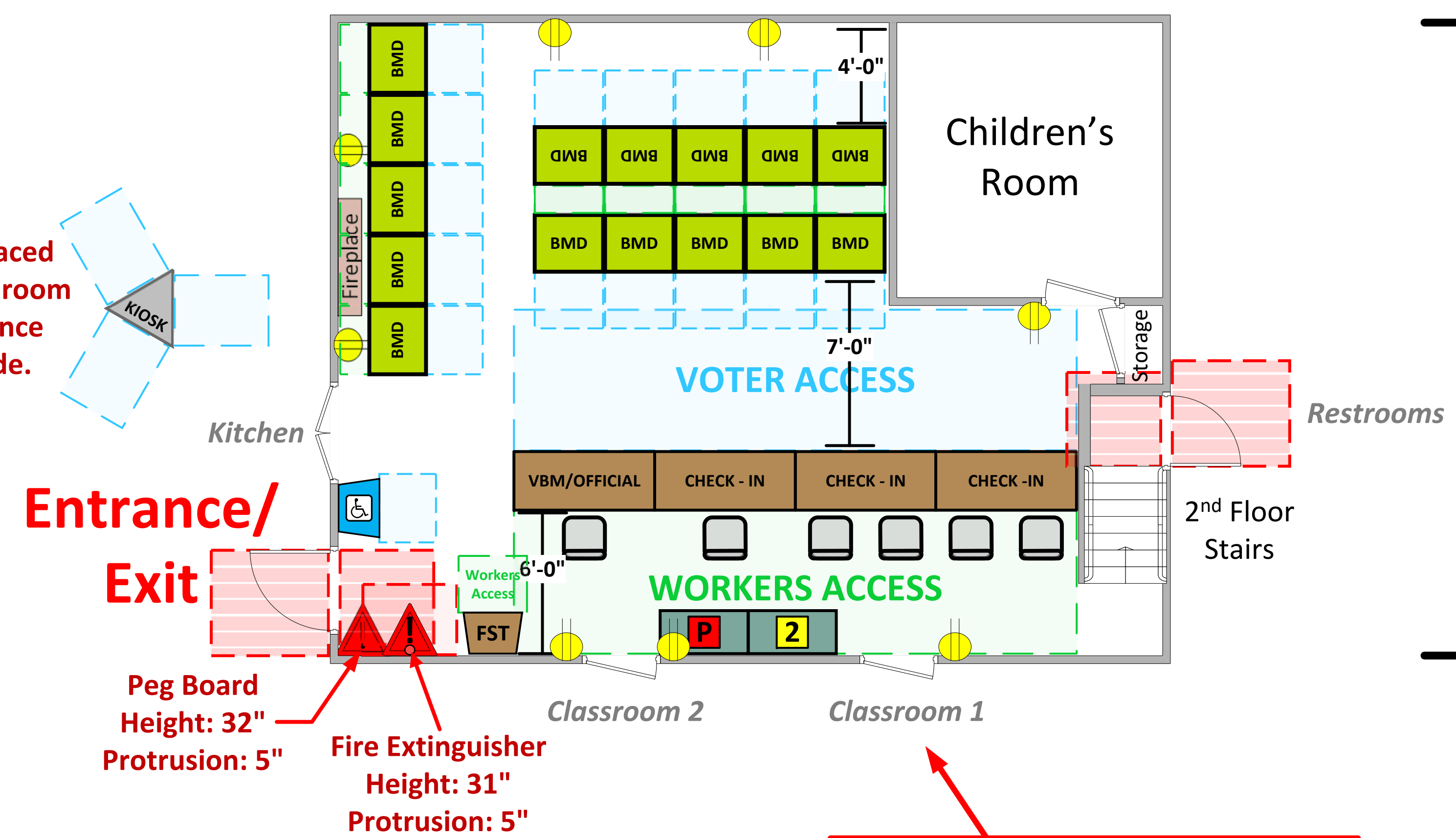


Fellowship Hall

(762 Usable Sq. Ft.)



Kiosk should be placed directly outside the room with 4 ft of clearance from each flat side.



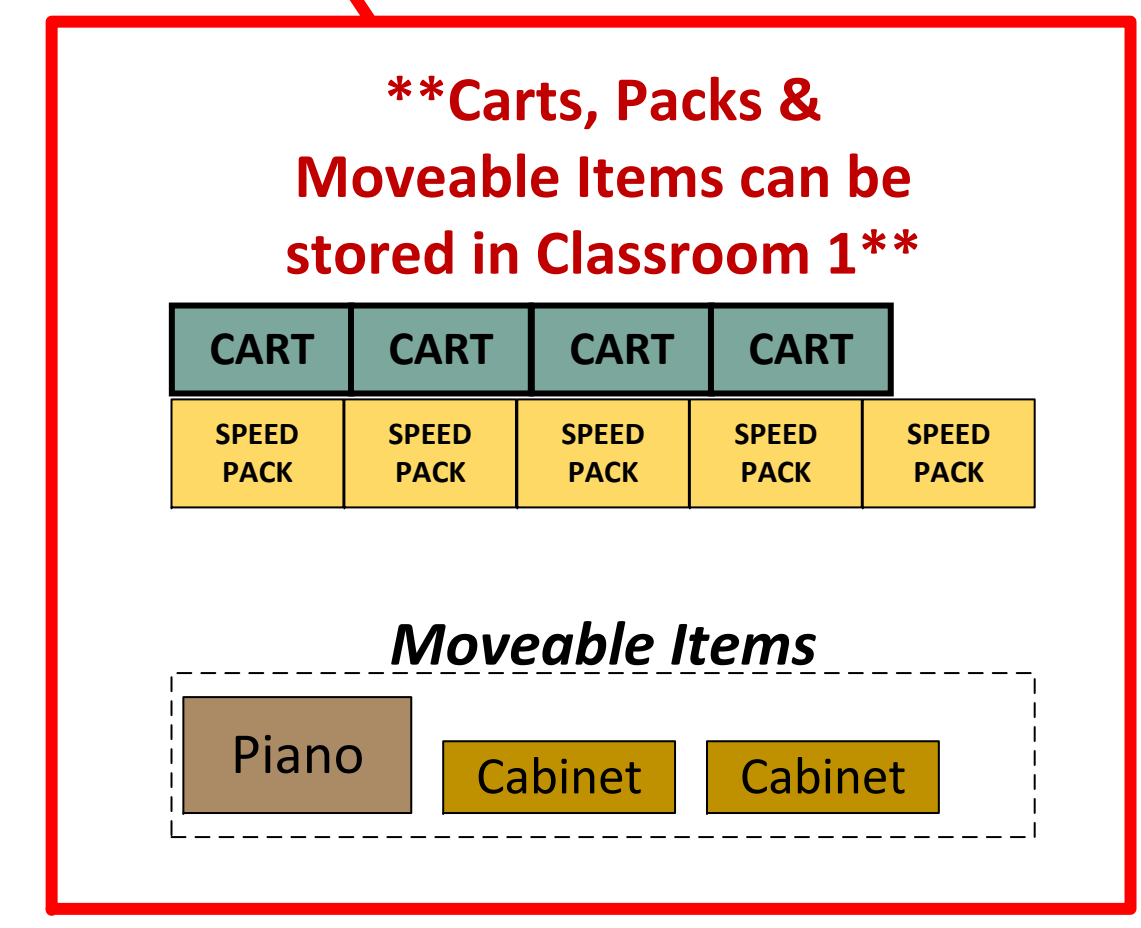
Entrance/Exit

Peg Board
Height: 32"
Protrusion: 5"

Fire Extinguisher
Height: 31"
Protrusion: 5"

LEGEND

| | | |
|-------------------|-------------------------|-----------------|
| Room Size | Dimension: 27' x 27' | Sq. Ft: 729' |
| Number of BMDs | 15 | |
| POWER OUTLET | | |
| PROTRUDING OBJECT | | |
| Do Not Block Area | | |



VCID 6366
Unitarian Universalist Church
of the Verdugo Hills

Each chair at a CHECK-IN station equals one ePollbook

| | |
|---------------------------------------------|----------------------------|
| Equipment By: Dustin Fuller | Date: 04/30/2026 |
| Skeleton Drawn By: David Chaparro | Date: 03/31/26 |
| Scale: 1/4" inches = 1' Ft. | |